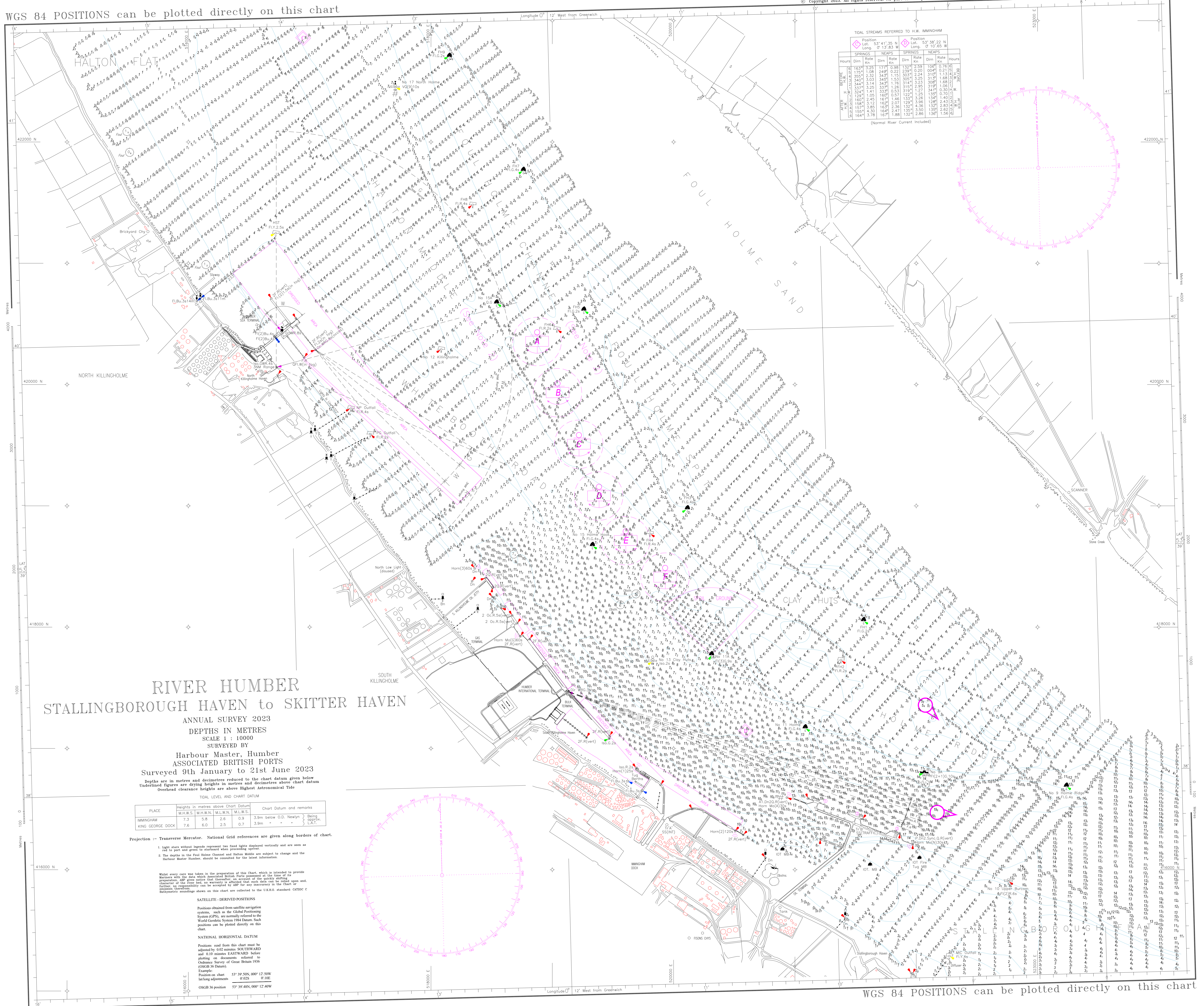


WGS 84 POSITIONS can be plotted directly on this chart

© Copyright 2023. All rights reserved. No part of this product may be reproduced in any form (including photocopying or by electronic means) without prior permission.



TIDAL STREAMS REFERRED TO H.W. IMMINGHAM

| Hours | SPRINGS | | | NEAPS | | | SPRINGS | | | NEAPS | | |
|-------|---------|---------|------|---------|------|---------|---------|---------|------|---------|------|---------|
| | Dirn | Rate kn | Dirn | Rate kn | Dirn | Rate kn | Dirn | Rate kn | Dirn | Rate kn | Dirn | Rate kn |
| 0 | 163 | 3.25 | 177 | 16.38 | 132 | 2.38 | 106 | 0.76 | 0 | 0 | 0 | 0 |
| 1 | 175 | 1.08 | 249 | 0.22 | 239 | 0.20 | 049 | 0.21 | 1 | 1 | 1 | 1 |
| 2 | 355 | 2.30 | 349 | 1.19 | 353 | 2.24 | 319 | 1.31 | 2 | 2 | 2 | 2 |
| 3 | 340 | 3.03 | 345 | 1.53 | 309 | 3.25 | 315 | 1.68 | 3 | 3 | 3 | 3 |
| 4 | 344 | 3.24 | 347 | 1.76 | 314 | 3.23 | 305 | 1.68 | 4 | 4 | 4 | 4 |
| 5 | 327 | 3.12 | 340 | 1.60 | 2.26 | 3.27 | 344 | 0.30 | 5 | 5 | 5 | 5 |
| 6 | 324 | 1.41 | 335 | 0.53 | 122 | 1.25 | 335 | 0.70 | 6 | 6 | 6 | 6 |
| 7 | 324 | 1.41 | 335 | 0.53 | 122 | 1.25 | 335 | 0.70 | 7 | 7 | 7 | 7 |
| 8 | 129 | 1.06 | 160 | 1.46 | 133 | 3.26 | 128 | 1.40 | 8 | 8 | 8 | 8 |
| 9 | 160 | 2.45 | 161 | 1.46 | 133 | 3.26 | 128 | 1.40 | 9 | 9 | 9 | 9 |
| 10 | 158 | 3.12 | 160 | 2.01 | 129 | 4.36 | 132 | 2.83 | 10 | 10 | 10 | 10 |
| 11 | 158 | 4.30 | 164 | 2.41 | 135 | 3.50 | 135 | 1.62 | 11 | 11 | 11 | 11 |
| 12 | 164 | 3.78 | 167 | 1.88 | 132 | 2.86 | 136 | 1.56 | 12 | 12 | 12 | 12 |

(Normal River Current Included)

RIVER HUMBER
STALLINGBOROUGH HAVEN to SKITTER HAVEN
 ANNUAL SURVEY 2023
 DEPTHS IN METRES
 SCALE 1 : 10000
 SURVEYED BY
Harbour Master, Humber
ASSOCIATED BRITISH PORTS
 Surveyed 9th January to 21st June 2023

Depths are in metres and decimetres reduced to the chart datum given below
 Underlined figures are drying heights in metres and decimetres above chart datum
 Overhead clearance heights are above Highest Astronomical Tide

TIDAL LEVEL AND CHART DATUM

| PLACE | Heights in metres above Chart Datum | | | | Chart Datum and remarks |
|------------------|-------------------------------------|----------|----------|----------|---|
| | M.H.W.S. | M.H.W.N. | M.L.W.N. | M.L.W.S. | |
| IMMINGHAM | 7.3 | 5.8 | 2.6 | 0.9 | 3.9m below O.D. Newlyn } Being approx. LAT. |
| KING GEORGE DOCK | 7.6 | 6.0 | 2.5 | 0.7 | |

Projection :- Transverse Mercator. National Grid references are given along borders of chart.

1. Light stars without legends represent two fixed lights displayed vertically and are seen as red to port and green to starboard when proceeding upriver.
2. The depths in the Foul Holme Channel and Halton Middle are subject to change and the Harbour Master Humber, should be consulted for the latest information.

Whilst every care was taken in the preparation of this chart, which is intended to provide navigators with the data which is essential for safe navigation, the accuracy of the data is not guaranteed. The accuracy of the data is dependent on the quality of the data provided to the charting authority. The accuracy of the data is not guaranteed. The accuracy of the data is dependent on the quality of the data provided to the charting authority.

SATELLITE-DERIVED POSITIONS
 Positions obtained from satellite navigation systems, such as the Global Positioning System (GPS), are normally referred to the World Geodetic System 1984 Datum. Such positions can be plotted directly on this chart.

NATIONAL HORIZONTAL DATUM
 Positions read from this chart must be adjusted by 0.02 minutes SOUTHWARD and 0.10 minutes EASTWARD before plotting on documents referred to Ordnance Survey of Great Britain 1936 (OSGR 36 Datum).

Example:
 Position on chart 53° 39' 50N, 000° 12' 50W
 lat/long adjustments 0.02S 0.10E
 OSGR 36 position 53° 39' 48N, 000° 12' 40W

WGS 84 POSITIONS can be plotted directly on this chart